

**STEP
&
RISER**

FULL BODY



DONATO

FULL BODY VITRIFIED TILES

300 x
1000mm

300 x
1200mm

WHY DONATO STEPPING STONE?

Easy to Install

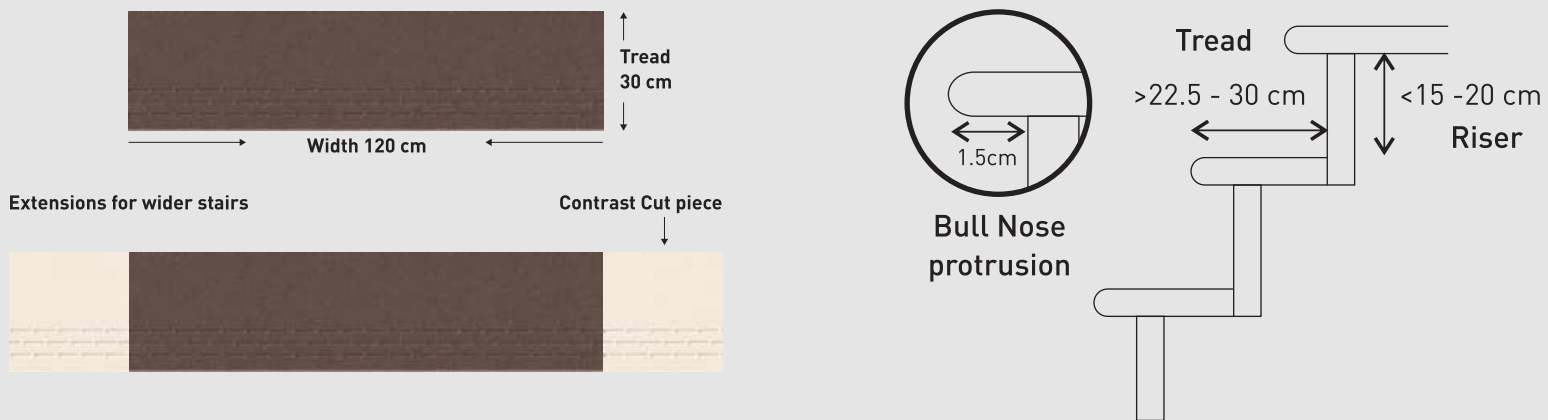
No more handling issues, No more labour-intensive on site installations, No more wastage costs. Our Stepping stone can be easy to install on site.

Safety

These full body vitrified tiles come with double nosing and tread lines that make them skid resistant and much more safe than conventional stairs.

Easy to Maintenance & Long Lasting

Chipped and worn out staircases, constant need for polishing and repairs are all things of the past. Our stepping stone are full bodied vitrified tiles, which means they absorb very low water and are impervious to weather or wear and tear induced damage. Fit them and forget them for years of trouble free performance.



APPLICATION AREAS



INDOOR



OUTDOOR



SWIMMING
POOL



FIRE EXIT



UNIVERSITY



HOSPITAL



SHOPPING MALL



BULL NOSE FINISH
Prevent Injuries from Sharp edges

SELF EMBOSSED GROOVES
Provides Better Grip

ANTI SKID PROPERTY
High Coefficient of Friction

FULL BODY VITRIFIED TILES
Homogeneous Body

PROPERTIES



SELF EMBOSSED TREAD LINES



ANTI SKID SURFACE



BULL NOSE FINISH



THICKNESS 12mm (STEPS)



WATER ABSORPTION <0.05%



FULL BODY VITRIFIED STEPS



EASY LAYING



DURABLE

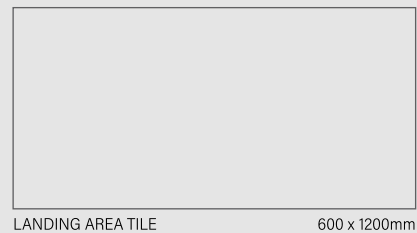
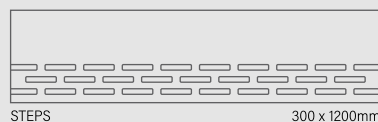
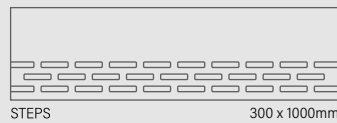


HIGH FLEXURAL STRENGTH



IN & OUT FINISHING

SIZE AVAILABLE





MINIMALIST



STEP-UP BEIGE

300 x 1200mm



CREST BEIGE

600 x 1200mm



STEP-UP BIANCO

300 x 1200mm



CREST BIANCO

600 x 1200mm





STEP-UP BROWN

300 x 1000mm



CREST BROWN

600 x 1200mm



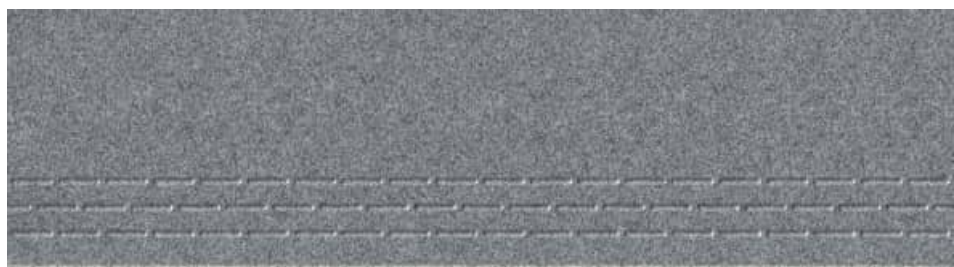
STEP-UP BROWN

300 x 1200mm



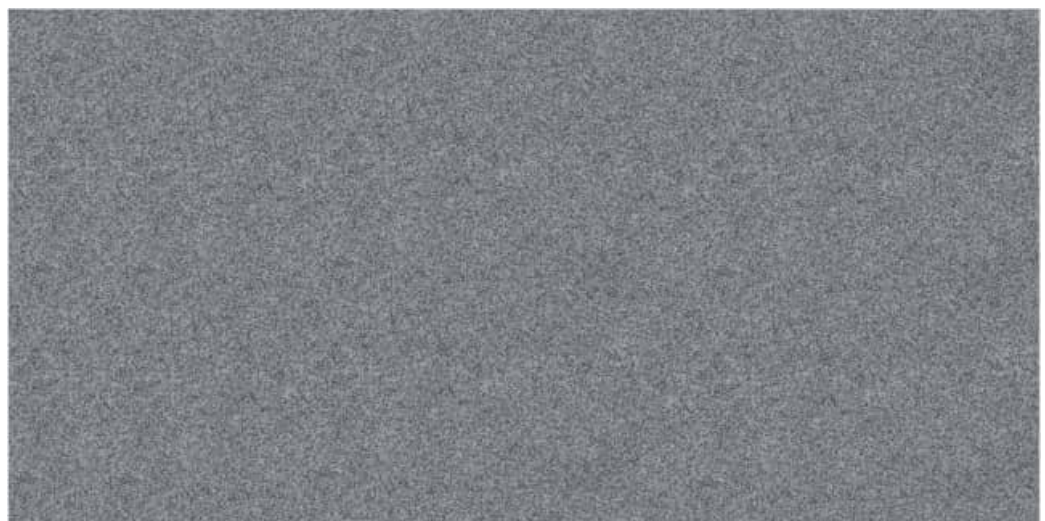
CREST BROWN

600 x 1200mm



STEP-UP CARLO

300 x 1000mm

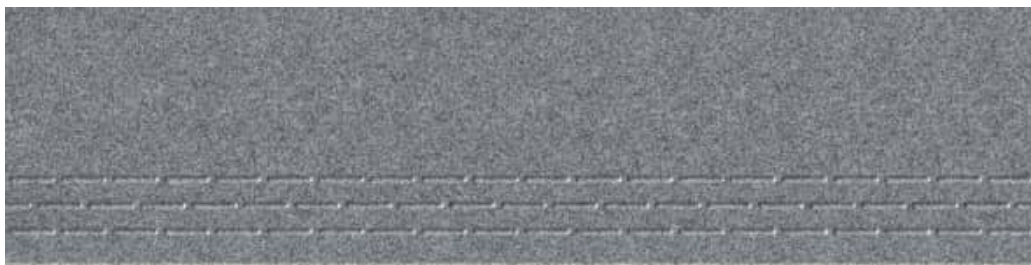


CREST CARLO

600 x 1200mm

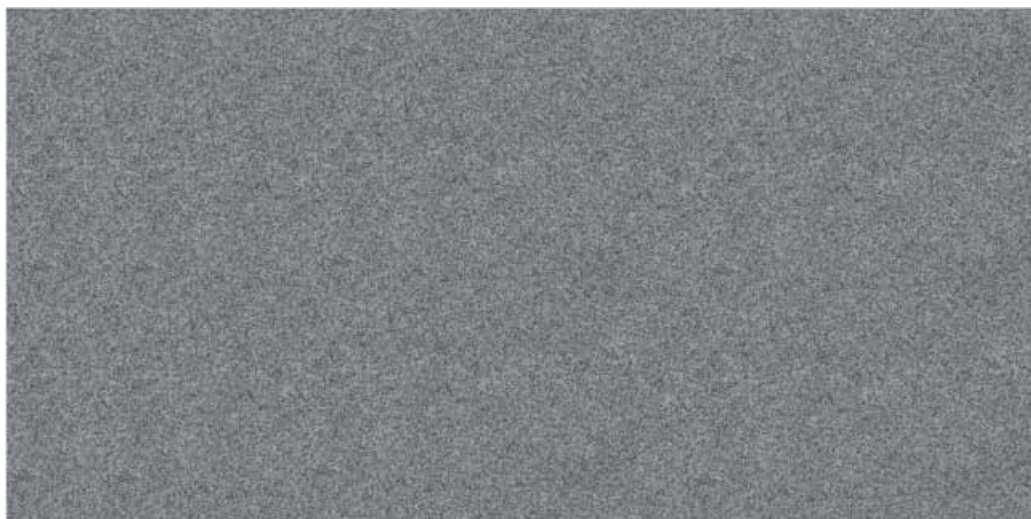


**HIGH
STRENGTH**



STEP-UP CARLO

300 x 1200mm



CREST CARLO

600 x 1200mm

U N I Q U E



STEP-UP COTTA

300 x 1200mm



CREST COTTA

600 x 1200mm



STEP-UP GRIS

300 x 1200mm



CREST GRIS

600 x 1200mm





T
R
E
N
D
I
N
G



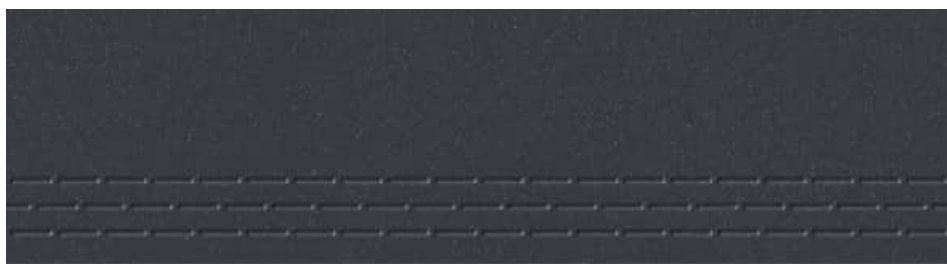
STEP-UP MINK

300 x 1200mm



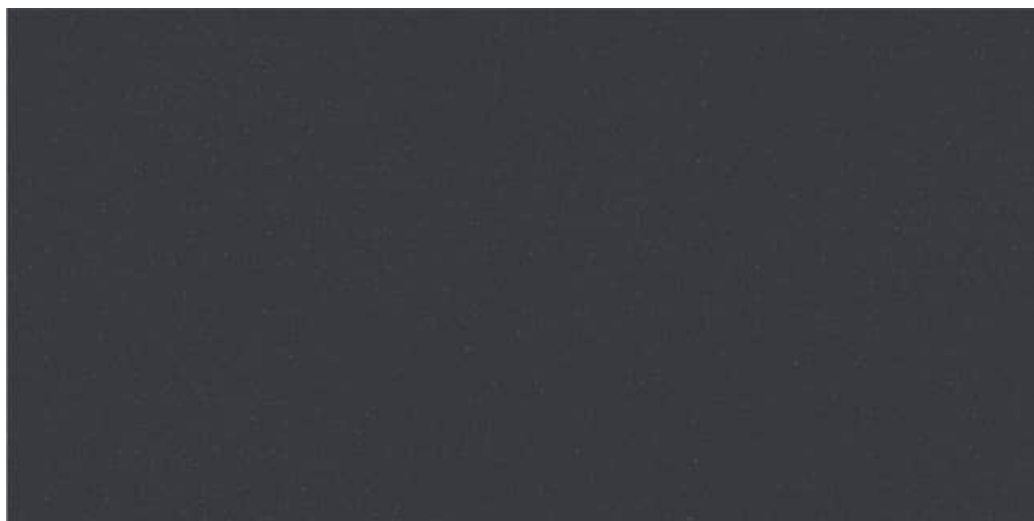
CREST MINK

600 x 1200mm



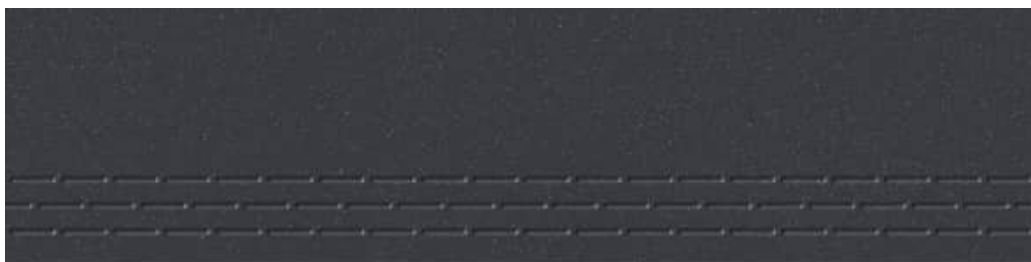
STEP-UP NERO

300 x 1000mm



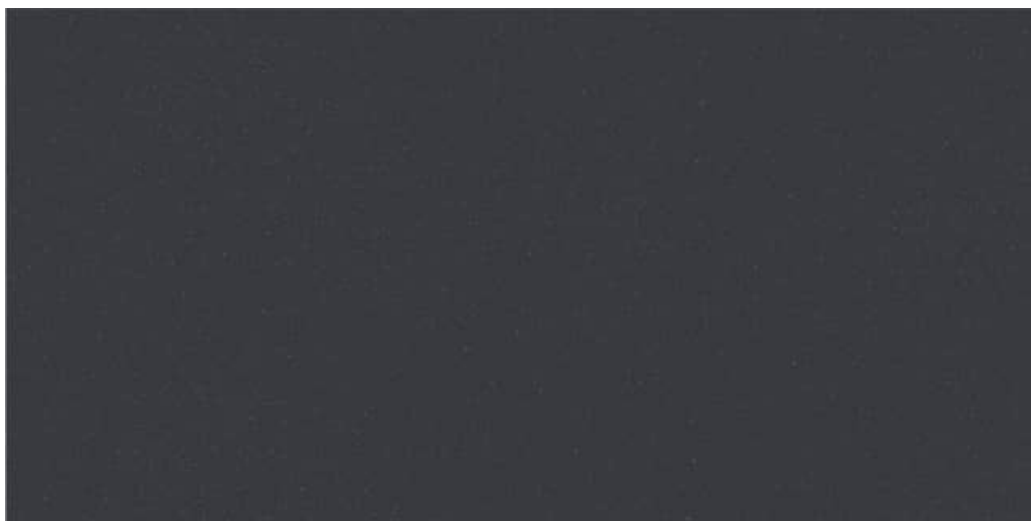
CREST NERO

600 x 1200mm



STEP-UP NERO

300 x 1200mm



CREST NERO

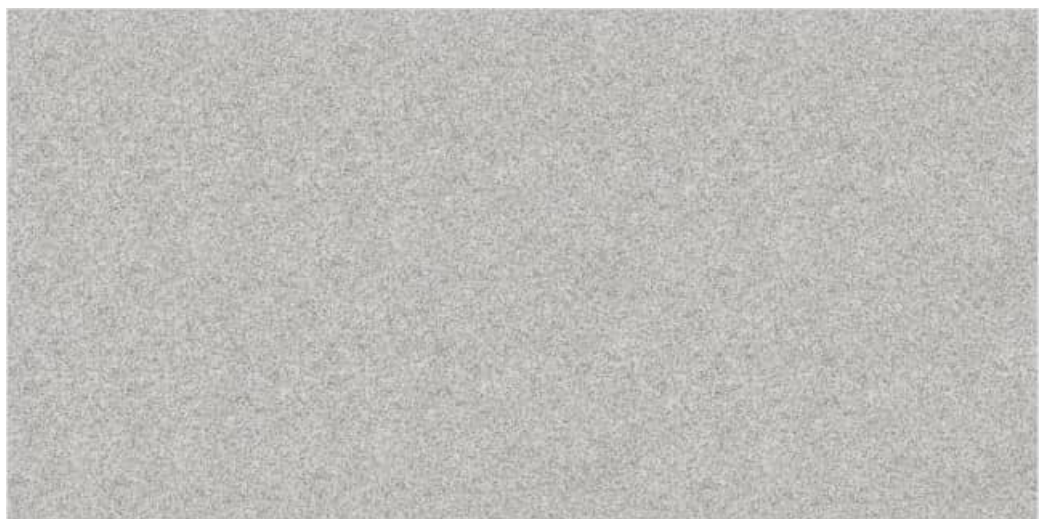
600 x 1200mm

ESTHETIC



STEP-UP PLUTO

300 x 1000mm



CREST PLUTO

600 x 1200mm



STEP-UP PLUTO

300 x 1200mm



CREST PLUTO

600 x 1200mm

TECHNICAL SPECIFICATION - FULL BODY VITRIFIED TILES

S. No.	CHARACTERISTIC	International Standards Group B1a- ISO 13006 Annx. G.	MEAN VALUE	TEST METHOD
Dimensions & surface Quality				
1.	Deviation in length and width	± 0.6%	± 0.1%	ISO 10545:2
2.	Deviation in thickness	± 5%	± 2%	ISO 10545:2
3.	Deviation in Straightness of sides	± 0.5%	± 0.1%	ISO 10545:2
4.	Deviation in Rectangularity	± 0.6%	± 0.1%	ISO 10545:2
5.	Deviation in Surface Flatness	± 0.5%	± 0.1%	ISO 10545:2
6.	Surface Quality (%)	Minimum 95%	No visible defects	ISO 10545:2
Physical characteristics				
7.	Scratch Hardness of surface Moh's scale	Min. 6	Min. 7	ISO 10545:3
8.	Water absorption	≤ 0.5%	≤ 0.05%	ISO 10545:3
9.	Moisture Expansion	Nil	Nil	ISO 10545:10
10.	Surface Abrasion Resistance	max 175mm ³	≤ 144mm ³	ISO 10545:7
Mechanical characteristics				
11.	Breaking strength	1300 n	≥ 2200 n	ISO 10545:4
12.	Modulus of rupture	≥ 35 N/mm ²	≥ 35 N/mm ²	ISO 10545:4
13.	Impact resistance	Declared by manufacturer	no indentation or cracking	ISO 10545:5
Safety characteristics				
Density				
14.	Density	2.20 gm/cc	2.34 gm/cc	DIN 51082
15.	Skid resistance	-	More than R10 (60x60cm x 9.7mm)	DIN 51130
Thermo photo characteristics				
16.	Thermal shock resistance	Resistant to 10 cycles	Pass min 10 cycles	ISO 10545:9
17.	Co efficient of thermal expansion	9x10 ⁻⁶ K ⁻¹ Max	<6x10 ⁻⁶ K ⁻¹ Max	ISO 10545:8
18.	Frost resistance	Resistant	Resistant	ISO 10545:12
19.	Color Resistance to UV light	Resistant	Resistant	ISO 10545:16
Chemical characteristics				
characteristics				
20.	Stain Resistance	Resistant	Resistant	ISO 10545:14
21.	Chemical Resistance HOUSE HOLD CHEMICAL & SWIMMING POOL SALT	min class-UB	Conform to classes-UA	ISO 10545:13
22.	Chemical Resistance LOW CONCENTRATIONS ACID & ALKALIES	min class-ULB	Conform to classes-ULA	ISO 10545:13
23.	Chemical Resistance HIGH CONCENTRATIONS ACID & ALKALIES	min class-ULB	Conform to classes-UHA	ISO 10545:13

PACKING DETAILS

S. No.	Dimensions (mm)	No. of tiles / box	Coverage Area
1.	300x1000	4 Pcs.	1.20 Sq. Mtr.
2.	300x1200	4 Pcs.	1.44 Sq. Mtr.
3.	600x1200	2 Pcs.	1.44 Sq. Mtr.

* Vitrified tiles have resistance to most of the stains/chemicals but, it is recommended to take due care while laying and for day-to-day maintenance.

Resistance to acids & alkalies (Exception Hydrofluoric Acids & its Compounds)

- Colours in the catalog are as accurate as printing process allows
- Sizes mentioned in the catalog are the nominal sizes only.
- Conforming to ISO requirements, technical specifications for Kajaria tiles are applicable only for 1st quality tiles.
- Please inspect all tiles prior to installation; company will not entertain complaints, once tiles are laid / fixed.
- For better laying, please follow the instructions on the packaging box.



DONATO VITRIFIED PVT. LTD.

Opp. Lakhdirpur Village, Lakhdirpur Road,
8-A National Highway, Morbi - 363 642,
Gujarat, India.

Customer Care :

+91 90999 37516

E-mail :

info@donatovitrified.com

marketing@donatovitrified.com

Website:

www.donatovitrified.com

Call :

South Zone : +91 90999 37508

North Zone : +91 90999 37512

West Zone : +91 90999 37513

Other Zone : +91 90999 37505